

Organizational Chart

■ Board of Directors

Chairman	Takashi Ando
President	Hiroki Takasaki
Representative Director	Kiyomi Suzuki
Director	Michio Iwakiri
	Yukinaga Furuhashi
	Satoshi Kato
	Atsuko Fukushima
	Hiroyasu Naito
	Nobuhiko Murakami

■ Board of Company Auditors

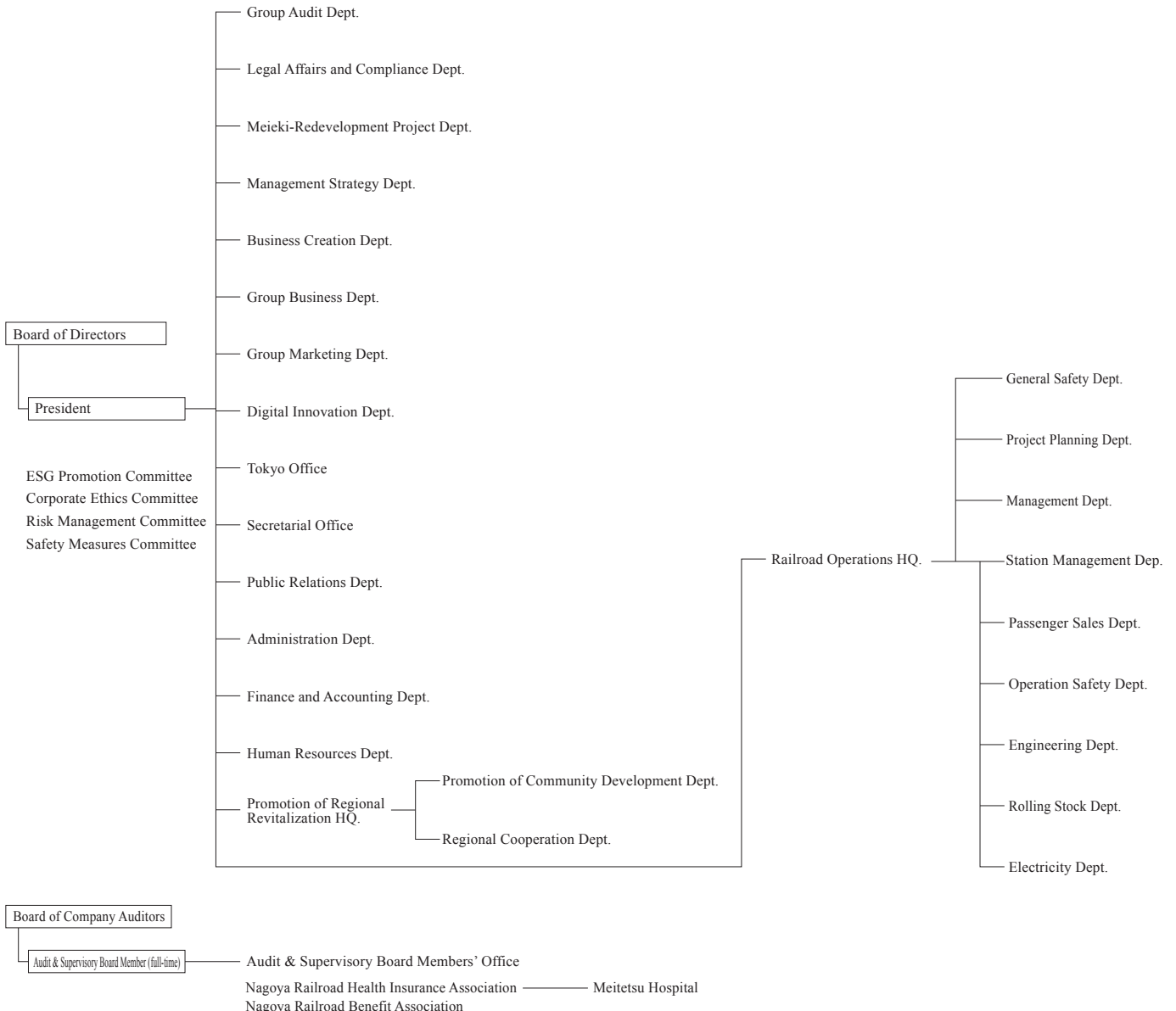
Senior Audit & Supervisory Board Member (full-time)	Akira Matsushita
	Tetsuya Sakurai
Audit & Supervisory Board Member	Toshio Mita
	Kazuo Sassa
	Hiroshi Mutou

■ Executive Officer

President	Hiroki Takasaki
Executive Vice-President	Kiyomi Suzuki <i>(Division Director, Promotion of Regional Revitalization HQ.)</i>
Senior Managing Executive Officer	Kimiharu Banno <i>(Division Director, Railroad Operations HQ.)</i>
	Mitsugu Momiyama
Managing Executive Officer	Yukinaga Furuhashi <i>(General Manager, Human Resources Dept.)</i>
	Satoshi Kato <i>(General Manager, Group Marketing Dept.)</i>
	Katsuhiko Yoshiguchi <i>(General Manager, Management Strategy Dept.)</i>
	Takeshi Suzuki <i>(General Manager, Management Strategy Dept.)</i>
	Naoki Ando <i>(Assistant Division Director, Promotion of Regional Revitalization HQ. and General Manager, Regional Cooperation Dept.)</i>
Executive Officer	Tomonori Kawatsu <i>(General Manager, Finance and Accounting Dept.)</i>
	Eiji Fukuta <i>(Assistant Division Director, Railroad Operations HQ. and General Manager, Operation Safety Dept.)</i>
	Yusuke Umemura <i>(General Manager, Group Business Dept.)</i>
	Hidenori Makino <i>(Assistant Division Director, Railroad Operations HQ. and General Manager, Management Dept.)</i>
	Osamu Horioka <i>(General Manager, Administration Dept.)</i>
	Masaaki Yamagata <i>(Assistant Division Director, Railroad Operations HQ. and General Manager, General Safety Dept. and General Manager, Engineering Dept.)</i>
	Hiroshi Hibino

■ Organizational Chart

(As of April 1, 2024)



(As of April 1, 2024)

Overview of the Meitetsu Group for Fiscal 2022

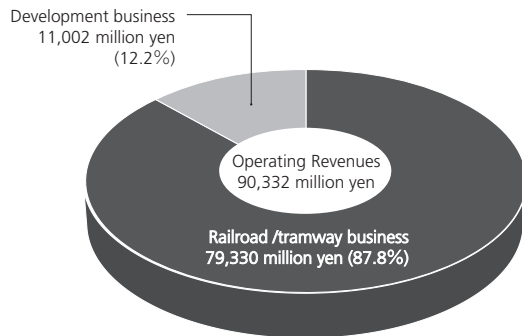
Nagoya Railroad Co., Ltd.

■ Summary of Company

Establishment	June 13, 1921 (Original establishment June 25, 1894, as Aichi Basha Tetsudo)
Head Office	1-2-4 Meieki, Nakamura-ku, Nagoya-shi, 450-8501
Paid in Capital	101,158 million yen (as of end of March 2023)

■ Description of Business

- Railroad / Tramway Business
- Development Business
- Annual Operating Revenue
90,332 million yen (for the year ending March 2023)
- Amount of Sales by Business



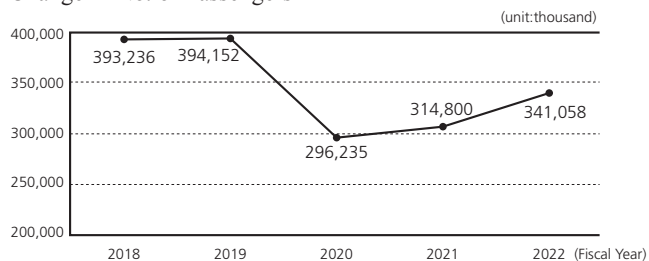
(For the year ending March 2023)

Outline of Railroad/Tramway Business

Type	Name of Line	Operating Kilometers	Location
Railroad	Nagoya Line, Tokoname Line, Inuyama Line, Airport Line, and 15 other lines	437	Aichi and Gifu prefectures
Tramway	Toyokawa Line	7.2	
No. of passenger stations		275 stations	
No. of passenger cars		1,076 cars	

(as of end of March 2023)

Change in No. of Passengers



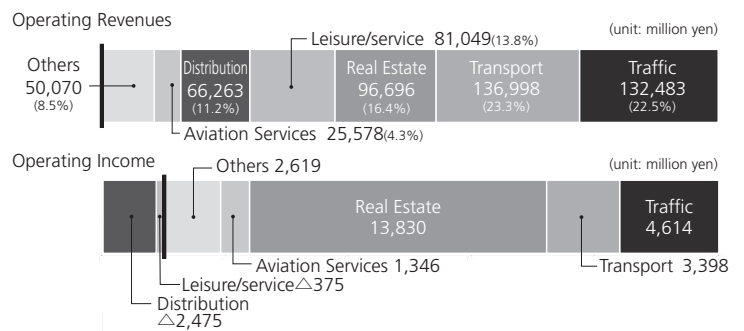
The Meitetsu Group

■ Overview of Fiscal 2022

Overview of the Consolidated Data

No. of Companies	No. of Consolidated Subsidiaries: 107	
	No. of Equity Method Affiliates: 13	
No. of Employees	28,216	
Operating Revenues	551,504 million yen	
Profits	Operating Income	22,731 million yen
	Ordinary Income	26,362 million yen
	Net Income	18,850 million yen

By Segment



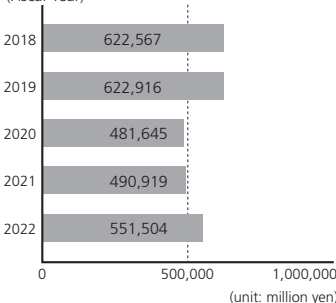
*Note: Operating revenue and operating income for each segment are before intersegment elimination.

Changes in No. of Group Companies

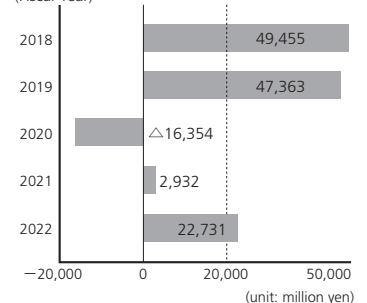
Fiscal Year	2018	2019	2020	2021	2022
No. of Consolidated Subsidiaries	117	113	109	109	107
No. of Equity Method Affiliates	15	15	14	13	13

Financial Highlights

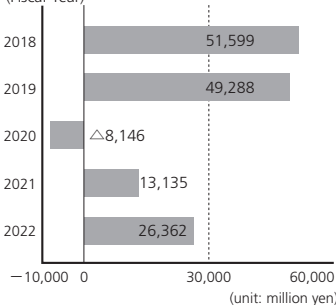
Operating Revenues (Fiscal Year)



Operating Income (Fiscal Year)



Ordinary Income (Fiscal Year)



Net Income (Fiscal Year)

