

Organizational Chart

■Board of Directors

Chairman.....	Takashi Ando
President.....	Hiroki Takasaki
Representative Director...	Kiyomi Suzuki
Director.....	Kimiharu Banno
	Yukinaga Furuhashi
	Satoshi Kato
	Atsuko Fukushima
	Hiroyasu Naito
	Nobuhiko Murakami
	Etsuko Takamura

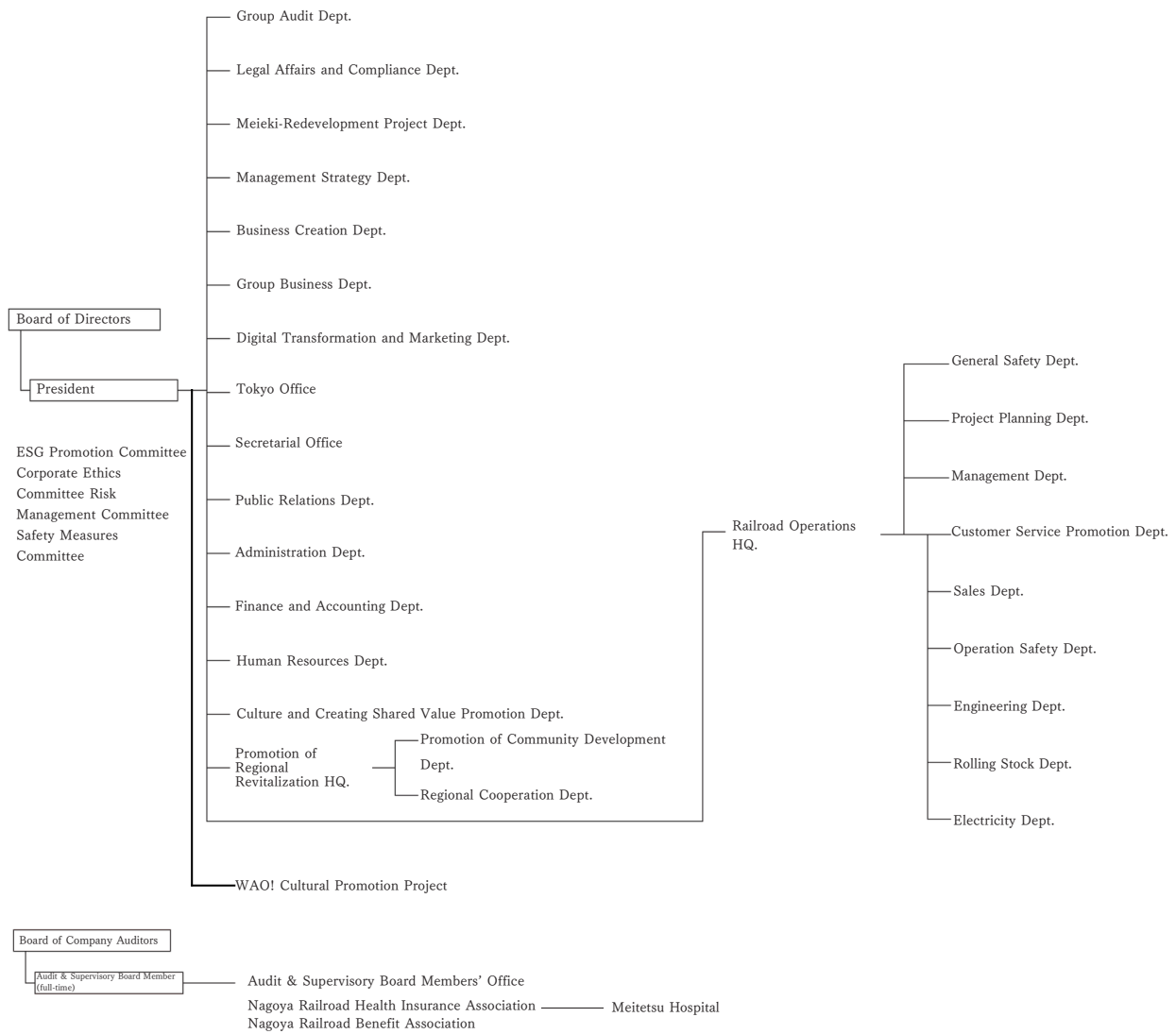
■Board of Company Auditors

Senior Audit &.....	Akira Matsushita
Supervisory Board	Tetsuya Sakurai
Member (full-time)	Hiroshi Muto
Audit & Supervisory...	Akihisa Mizuno
Board Member	Takeshi Ogasawara

■Executive Officer

President.....	Hiroki Takasaki
Executive.....	Kiyomi Suzuki
Vice-President	(Division Director, Promotion of Regional Revitalization HQ.)
Senior Managing	Kimiharu Banno
Executive Officer	(Division Director, Railroad Operations HQ.)
	Mitsugu Momiyama
	(Assistant Division Director, Promotion of Regional Revitalization HQ.)
Managing.....	Yukinaga Furuhashi
Executive Officer	Satoshi Kato
	Takeshi Suzuki
	Naoki Ando
	(Assistant Division Director, Promotion of Regional Revitalization HQ.)
	Tomonori Kawatsu
	(General Manager, Finance and Accounting Dept.)
	Eiji Fukuta
	(Assistant Division Director, Railroad Operations HQ. and General Manager, Rolling Stock and Customer Service Promotion Dept.)
Executive Officer.....	Yusuke Umemura
	(General Manager, Group Business Dept.)
	Hidenori Makino
	(Assistant Division Director, Railroad Operations HQ. and General Manager, Project Planning Dept.)
	Kunihiko Ebi
	(General Manager, Administration and Public Relations Dept.)
	Masaaki Yamagata
	(Assistant Division Director, Railroad Operations HQ. and General Manager, Engineering Dept.)
	Yasuhito Yokoi
	(General Manager, Digital Transformation and Marketing Dept.)
	Kazuyuki Oda
	(General Manager, Management Strategy Dept.)
	Hiroshi Hibino
	Syuuichi Taki
	Takeo Asano
	Michio Iwakiri
	Takuo Yoshikawa
	Hajime Futagami

Organizational Chart



Overview of the Meitetsu Group for Fiscal 2023

Nagoya Railroad Co., Ltd.

■ Summary of Company

Establishment	June 13, 1921 (Original establishment June 25, 1894, as Aichi Basha Tetsudo)
Head Office	1-2-4 Meieki, Nakamura-ku, Nagoya-shi, 450-8501
Paid in Capital	101,158 million yen (as of end of March 2024)

■ Description of Business

	Amount of Sales by Business (For the year ending March 2024)
Railroad/Tramway Business	86,733million yen (88.5%)
Development Business	11,291million yen (11.5%)

● Annual Operating Revenue

98,025million yen (For the year ending March 2024)

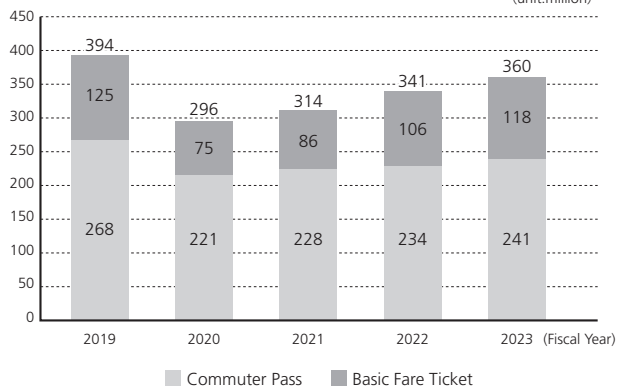
Outline of Railroad/Tramway Business

Type	Name of Line	Operating Kilometers	Location
Railroad	Nagoya Line, Tokoname Line, Inuyama Line, Airport Line, and 15 other lines	437	Aichi and Gifu prefectures
Tramway	Toyokawa Line	7.2	
No. of passenger stations		276 stations	
No. of passenger cars		1,064 cars	

(as of end of March 2024)

Change in No. of Passengers

(unit: million)



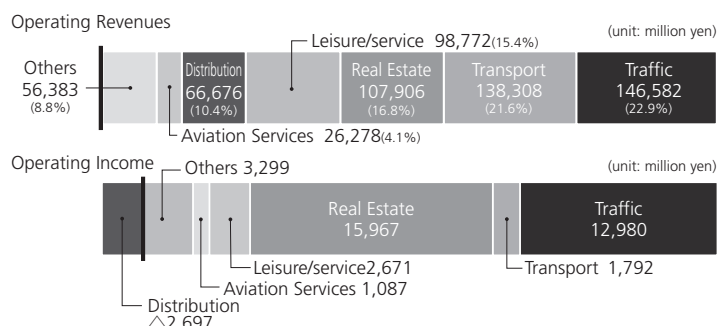
The Meitetsu Group

■ Overview of Fiscal 2023

Overview of the Consolidated Data

No. of Companies	No. of Consolidated Subsidiaries: 104	
	No. of Equity Method Affiliates: 14	
No. of Employees	28,412	
Operating Revenues	601,121 million yen	
Profits	Operating Income	34,750 million yen
	Ordinary Income	37,544 million yen
	Net Income	24,400 million yen

By Segment



*Note: Operating revenue and operating income for each segment are before intersegment elimination.

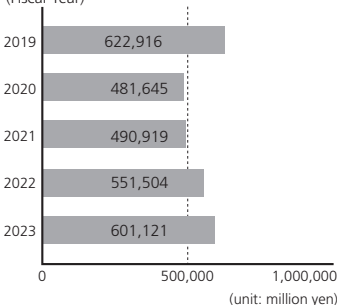
Changes in No. of Group Companies

Fiscal Year	2019	2020	2021	2022	2023
No. of Consolidated Subsidiaries	113	109	109	107	104
No. of Equity Method Affiliates	15	14	13	13	14

Financial Highlights

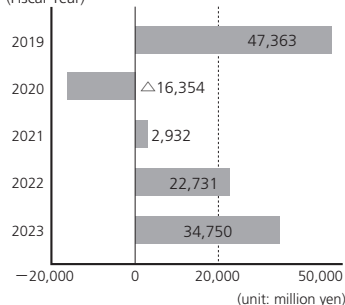
Operating Revenues

(Fiscal Year)



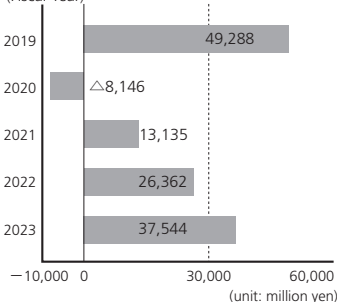
Operating Income

(Fiscal Year)



Ordinary Income

(Fiscal Year)



Net Income

(Fiscal Year)

