

Organizational Chart

■ Board of Directors

Chairman	Takashi Ando
President	Hiroki Takasaki
Representative Director.....	Kiyomi Suzuki
Director	Hiroshi Yano Michio Iwakiri Yukinaga Furuhashi Satoshi Ozawa Atsuko Fukushima Hiroyasu Naito

■ Board of Company Auditors

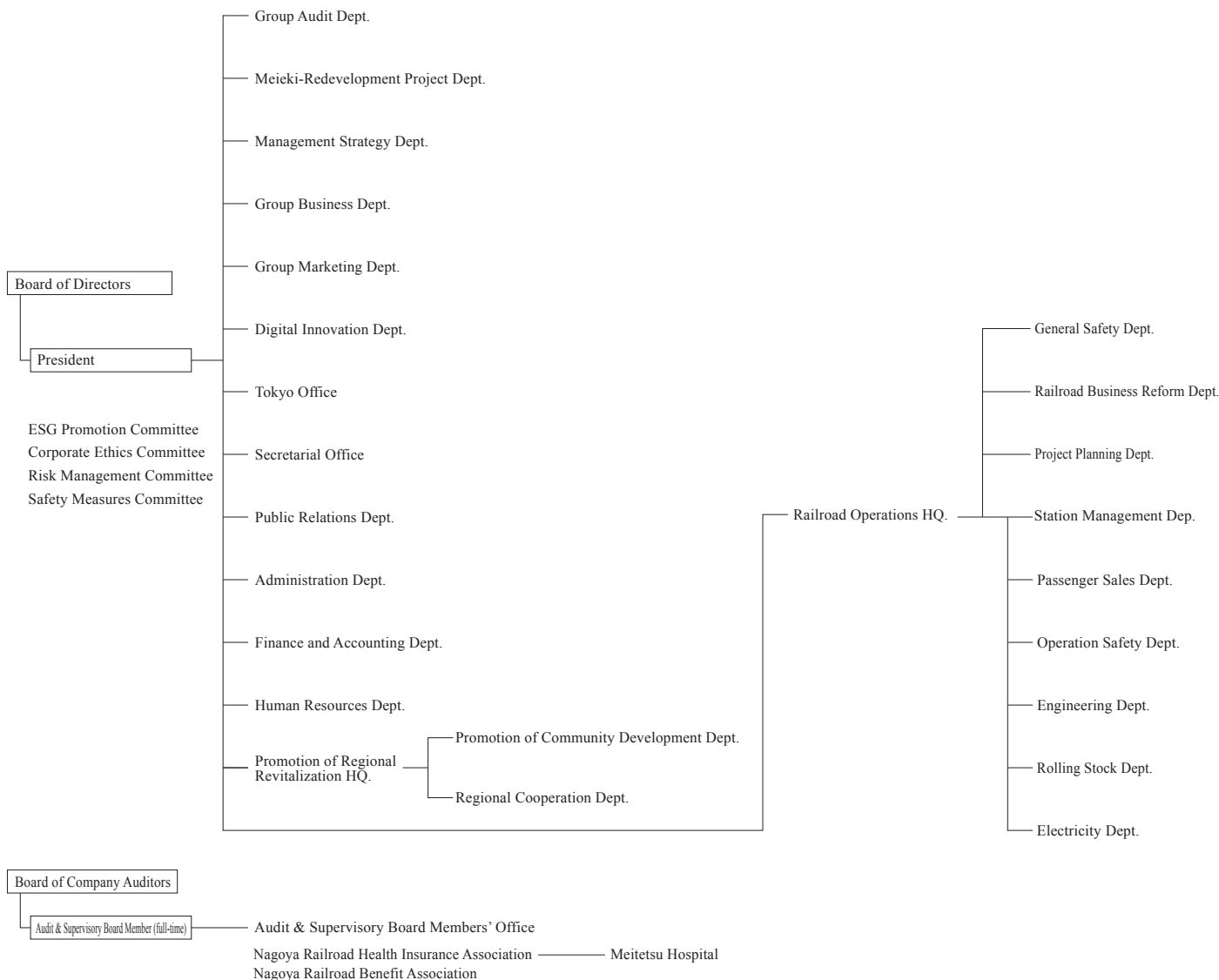
Senior Audit & Supervisory Board Member (full-time)	Akira Matsushita Tetsuya Sakurai
Audit & Supervisory Board Member	Toshio Mita Kazuo Sassa Hiroshi Mutou

■ Executive Officer

President	Hiroki Takasaki <i>(Division Director, Promotion of Regional Revitalization HQ.)</i>
Executive Vice-President	Kiyomi Suzuki <i>(Division Director, Railroad Operations HQ.)</i>
Senior Managing Executive Officer	Hiroshi Yano Michio Iwakiri <i>(Assistant Division Director, Promotion of Regional Revitalization HQ.)</i>
Managing Executive Officer	Mitsugu Momiyama Kimiharu Banno <i>(Assistant Division Director, Railroad Operations HQ.)</i> Yukinaga Furuhashi <i>(General Manager, Group Business Dept.)</i> Satoshi Kato <i>(General Manager, Human Resources Dept.)</i>
Executive Officer	Naohiro Asano <i>(General Manager, Digital innovation Dept.)</i> Takeshi Suzuki <i>(General Manager, Management Strategy Dept.)</i> Naoki Ando <i>(Assistant Division Director, Railroad Operations HQ. and General Manager, General Safety Dept.)</i> Hiroyuki Kawase <i>(General Manager, Administration Dept. and Public Relations Dept.)</i> Tomonori Kawatsu <i>(General Manager, Finance and Accounting Dept.)</i> Eiji Fukuta <i>(Assistant Division Director, Railroad Operations HQ. and General Manager, Operation Safety Dept.)</i> Hidenori Makino <i>(Assistant Division Director, Railroad Operations HQ. and General Manager, Railroad Business Reform Dept.)</i> Hiroshi Hibino

(As of June 28, 2022)

■ Organizational Chart



(As of April 1, 2022)

Overview of the Meitetsu Group for Fiscal 2021

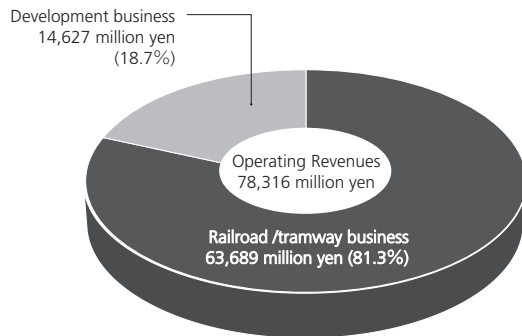
Nagoya Railroad Co., Ltd.

■ Summary of Company

Establishment	June 13, 1921 (Original establishment June 25, 1894, as Aichi Basha Tetsudo)
Head Office	1-2-4 Meieki, Nakamura-ku, Nagoya-shi, 450-8501
Paid in Capital	101,158 million yen (as of end of March 2021)

■ Description of Business

- Railroad / Tramway Business
- Development Business
- Annual Operating Revenue
78,316 million yen (for the year ending March 2021)
- Amount of Sales by Business



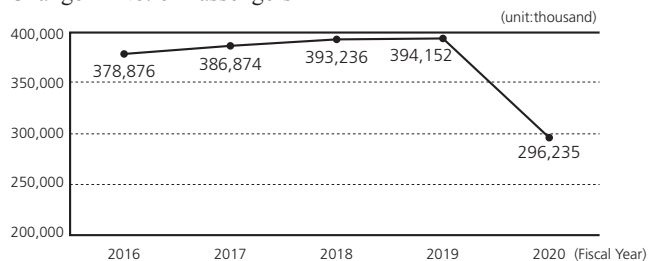
(For the year ending March 2021)

Outline of Railroad/Tramway Business

Type	Name of Line	Operating Kilometers	Location
Railroad	Nagoya Line, Tokoname Line, Inuyama Line, Airport Line, and 15 other lines	437	Aichi and Gifu prefectures
Tramway	Toyokawa Line	7.2	
No. of passenger stations		275 stations	
No. of passenger cars		1,076 cars	

(as of end of March 2021)

Change in No. of Passengers



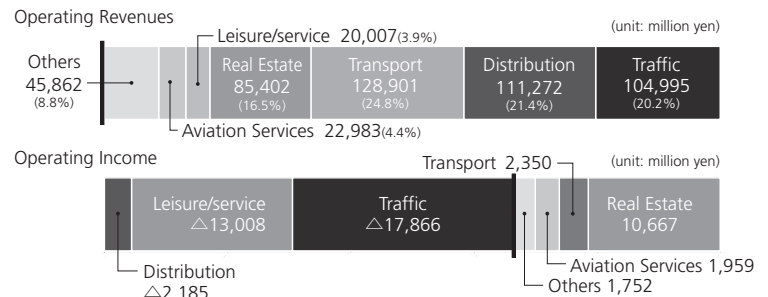
The Meitetsu Group

■ Overview of Fiscal 2020

Overview of the Consolidated Data

No. of Companies	No. of Consolidated Subsidiaries: 109	
	No. of Equity Method Affiliates: 14	
No. of Employees	29,309	
Operating Revenues	481,645 million yen	
Profits	Operating Income	△16,354 million yen
	Ordinary Income	△ 8,146 million yen
	Net Income	△28,769 million yen

By Segment



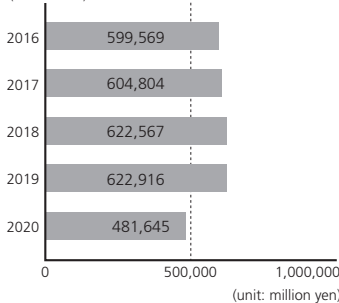
*Note: Operating revenue and operating income for each segment are before intersegment elimination.

Changes in No. of Group Companies

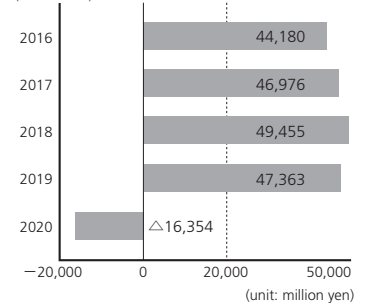
Fiscal Year	2016	2017	2018	2019	2020
No. of Consolidated Subsidiaries	123	119	117	113	109
No. of Equity Method Affiliates	15	16	15	15	14

Financial Highlights

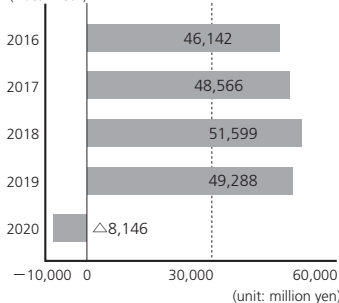
Operating Revenues (Fiscal Year)



Operating Income (Fiscal Year)



Ordinary Income (Fiscal Year)



Net Income (Fiscal Year)

